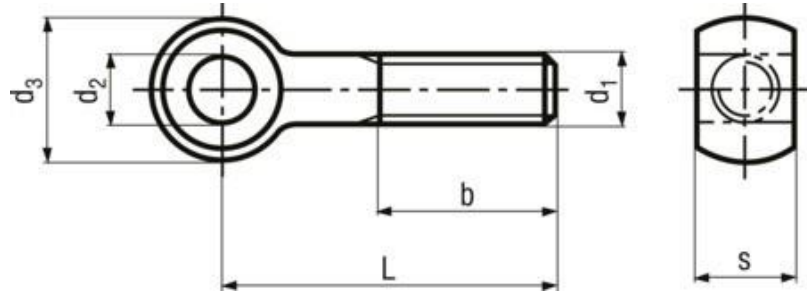


# Eye bolts

BN 1940



Thread: fully threaded

Material: Steel

Strength class: 4.6

Surface: zinc plated blue

Standard: DIN 444 B,

Article no.	d1	L	d2 H9	d3 max.	s max.	b
4806020	M6	20	6	14	7	10
4810040	M10	40	10	20	12	26
4816180	M16	180	16	32	17	44