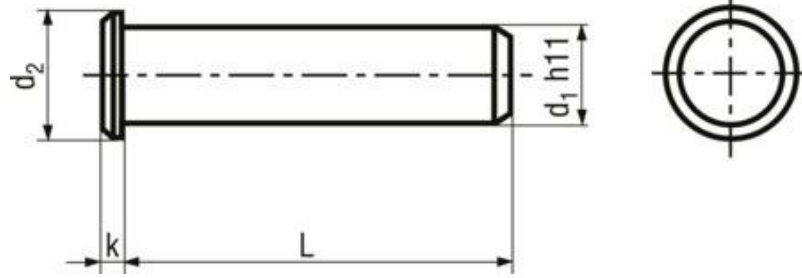


Clevis pins without hole for fork heads

DIN-7982



Headform

Cylindrical flat

Material

Steel

Surface

As per Requirements

Standard

DIN 7982

Article no.	d1	L	d2	k
7605016	5	16	8	1,5
7605020	5	20	8	1,5
7605030	5	30	8	1,5
7605040	5	40	8	1,5
7605050	5	50	8	1,5
7606016	6	16	9	1,5
7606020	6	20	9	1,5
7606030	6	30	9	1,5
7606040	6	40	9	1,5
7606050	6	50	9	1,5
7608016	8	16	12	2
7608020	8	20	12	2
7608030	8	30	12	2
7608040	8	40	12	2
7608050	8	50	12	2
7608060	8	60	12	2
7601020	10	20	14	2
7601030	10	30	14	2
7601040	10	40	14	2
7601050	10	50	14	2
7601060	10	60	14	2