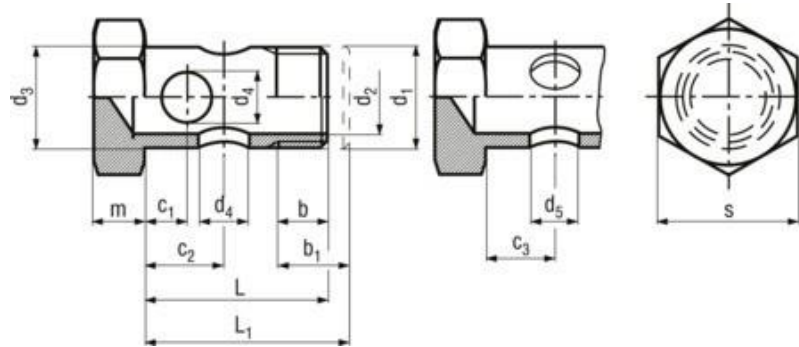


Banjo bolts standard design



DIN-7643



Additional information

Hollow screws for pipe OD 4 - 5 mm are provided with 2 or 3 holes at manufacturer's option (see c3 + d5).
 Hollow screws for pipe OD 6 mm and larger are supplied in the standard design at manufacturer's option with 3 holes (see c3 + d5) or 4 holes (see c2 + d4).
 Hollow screws with longer threads (e.g. like used in aluminum), are available on request as special design (see b1 + L1).

Headform

Hexagon

Drive

Hexagon

Thread

partially threaded

Material

As per requirement

Surface

As per requirement

Standard

DIN-7643

Article no.	Pipe O D	d1	d2	d3	d4	d5	m	c1	c2	c3	s	b	L	b1	L1
3608017	4-5	M8x1	4	8	-	3	5	-	-	4,5	12	8,5	17	-	-
3610019	6	M10x1	5,5	10	2,8	3,5	6	4,5	6,5	6	14	8,5	19	12,5	23
3612024	8	M12x1,5	7	12	3,5	4,5	6	5	8	7	17	11	24	15	28
3614026	10	M14x1,5	9	14	4,5	5,5	6	5,5	9,5	8	19	11	26	17	32
3618032	15	M18x1,5	13	18	7	8,5	6	7,5	14	12	24	11	32	21	42
3622039	18	M22x1,5	16	22	9	11	7	9	18	15	27	13	39	24	50